

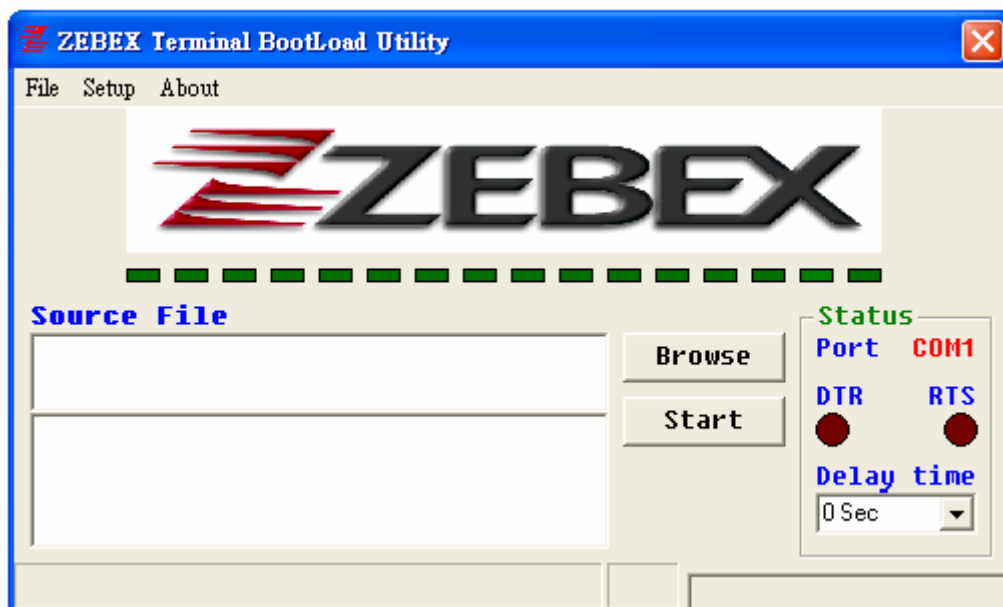
## Z-1060 & Z-1070/Z-1071 Firmware Updating Steps by BootLoad v1.15

**STEP 1:** Connect the unit to PC with power adapter. Make sure it can work fine with WinTaskGen. 将设备通过USB或RS232Cable与PC相连，并接上电源 确保设备与主机能够正常通讯（用WinTaskGen测试，注意COM口设置）

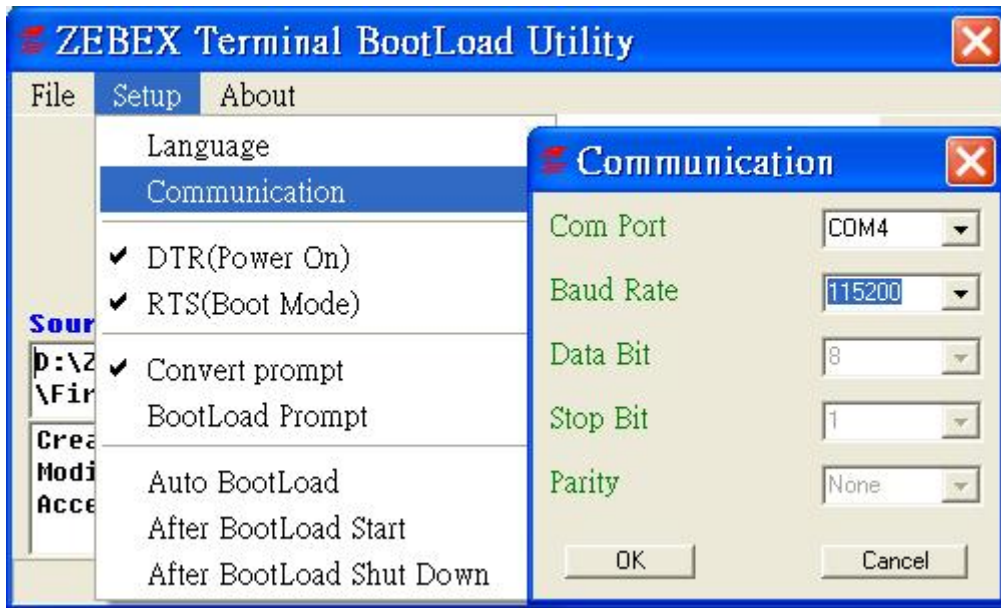
**STEP 2:** Do not connect the cable with the unit at this moment.  
将设备关机并与数据线断开连接



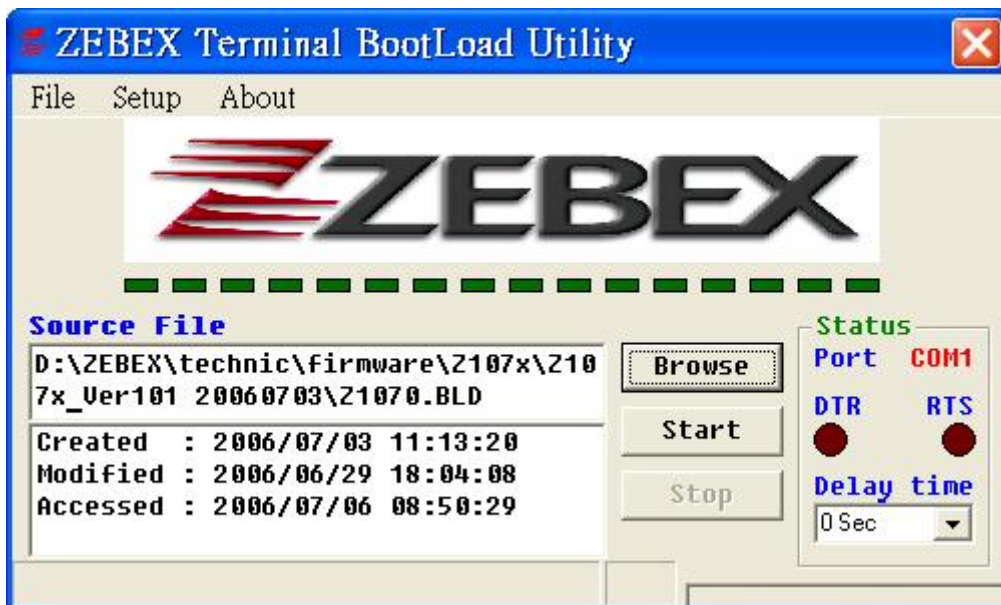
**STEP 3:** Run ZEBOTW v1.15 Terminal BootLoad Utility.



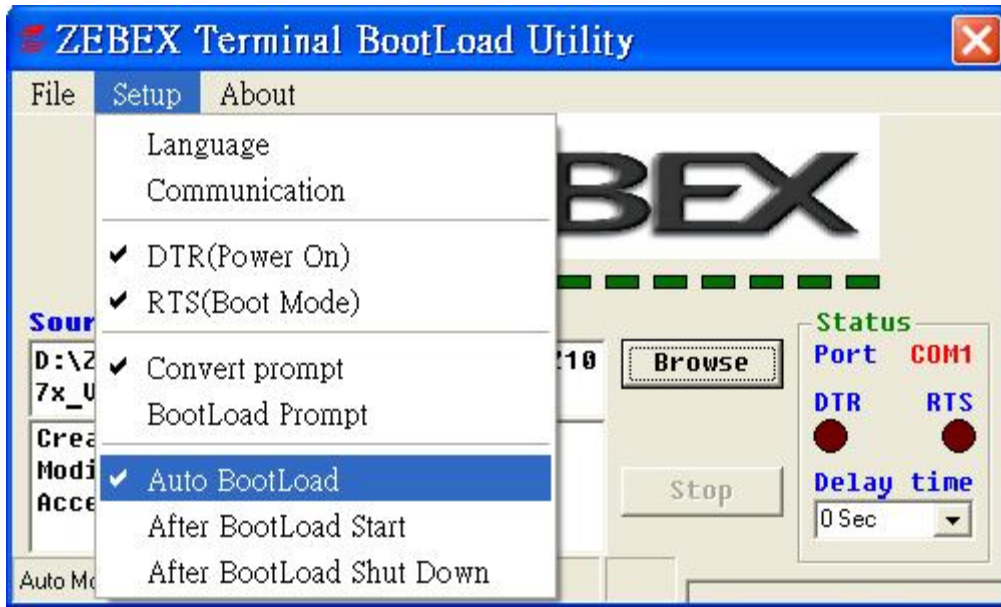
**STEP 4:** Choose the right COM port to connect.



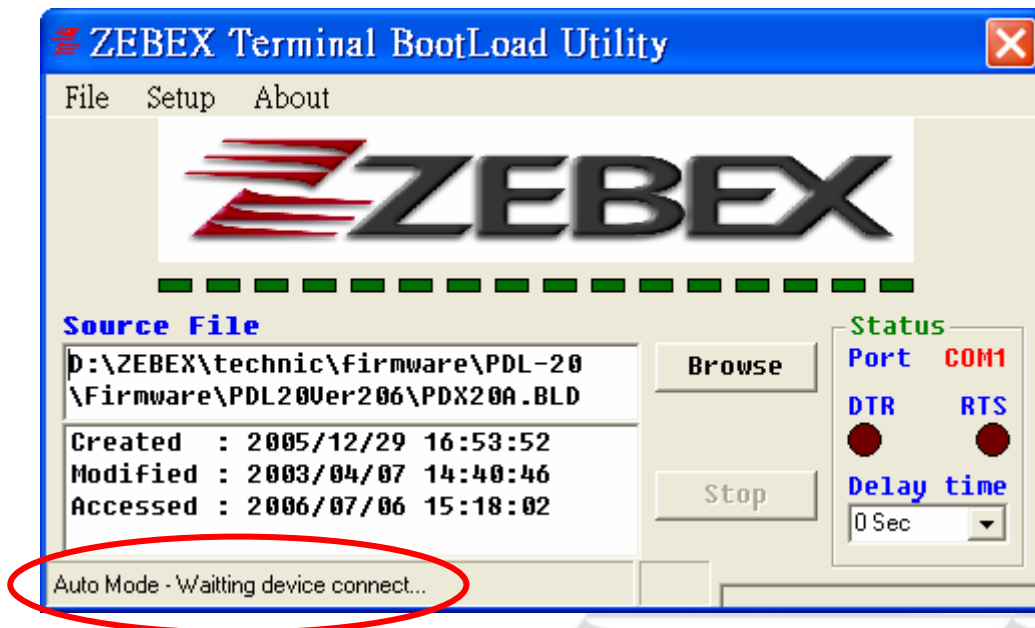
**STEP 5:** Browse and find the firmware file called Z10xx.BLD



**STEP 6:** Make a check on “Setup”→ “Auto Boot Load”.



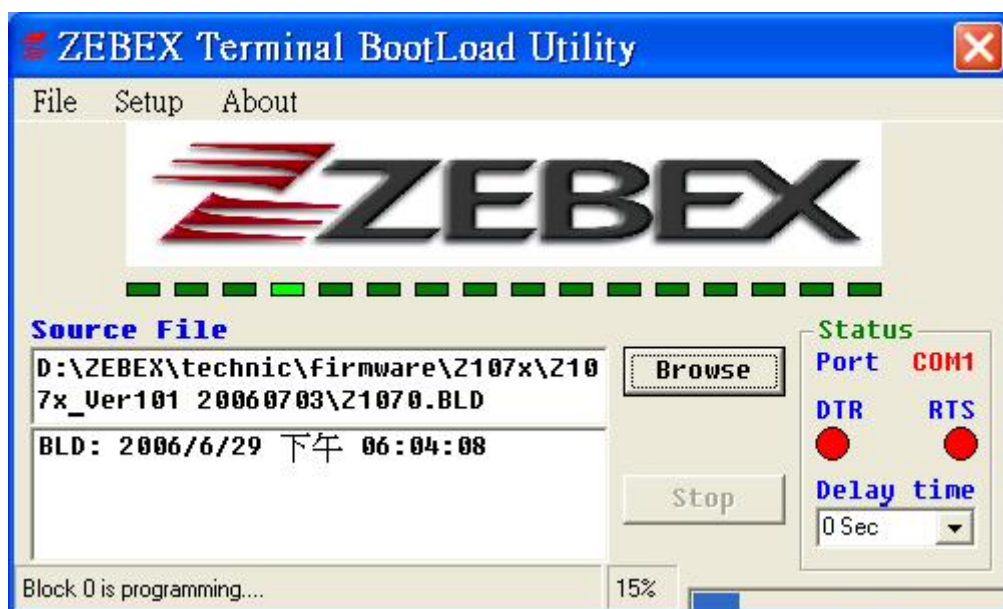
**STEP 7:** Make sure you saw “Waiting device connect” as below.



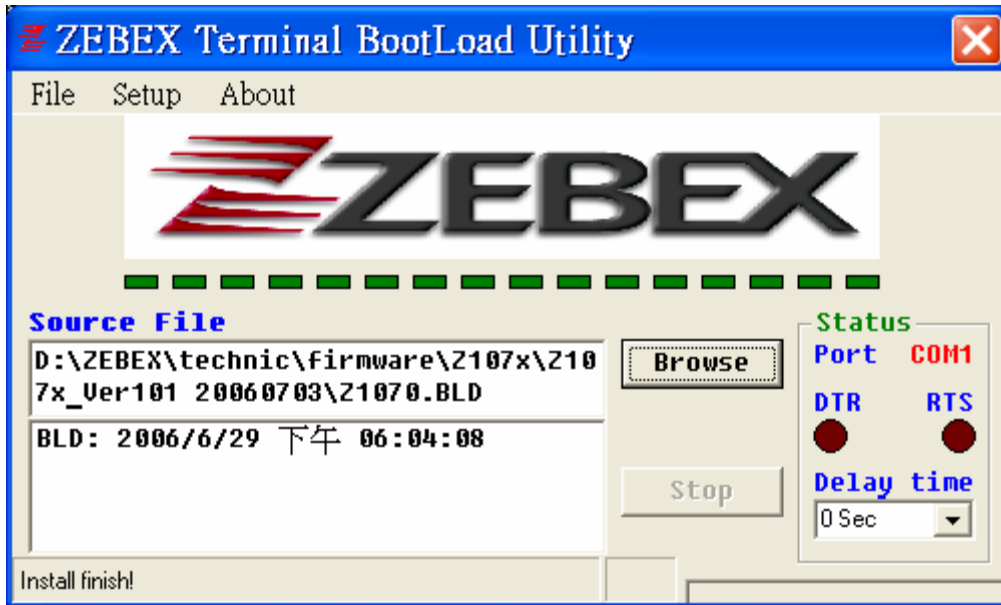
**STEP 8:** Connect the cable with the unit now. (Both USB cable and RS-232 cable are fine.) It shows "Boot Load Mode" on the LCD.  
此时将设备通过数据线与PC相连（设备处于关机状态），按压左方向键



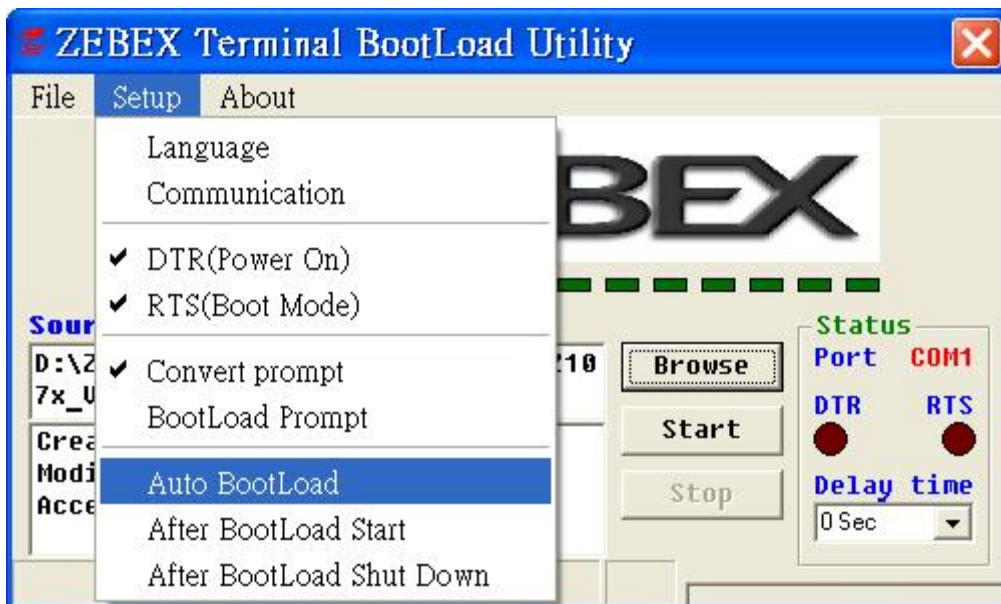
**STEP 9:** The software will start to update.



**STEP 10:** Firmware update finished.



**STEP 11:** Cancel the check on “Auto BootLoad” and close the software.



**STEP 12:** Plug out the connector from unit.

**STEP 13:** Press FN key to turn off the unit.